



HOME SIZE

232m²

BEDROOMS

4

BATHROOMS

2

CAR SPACE

2

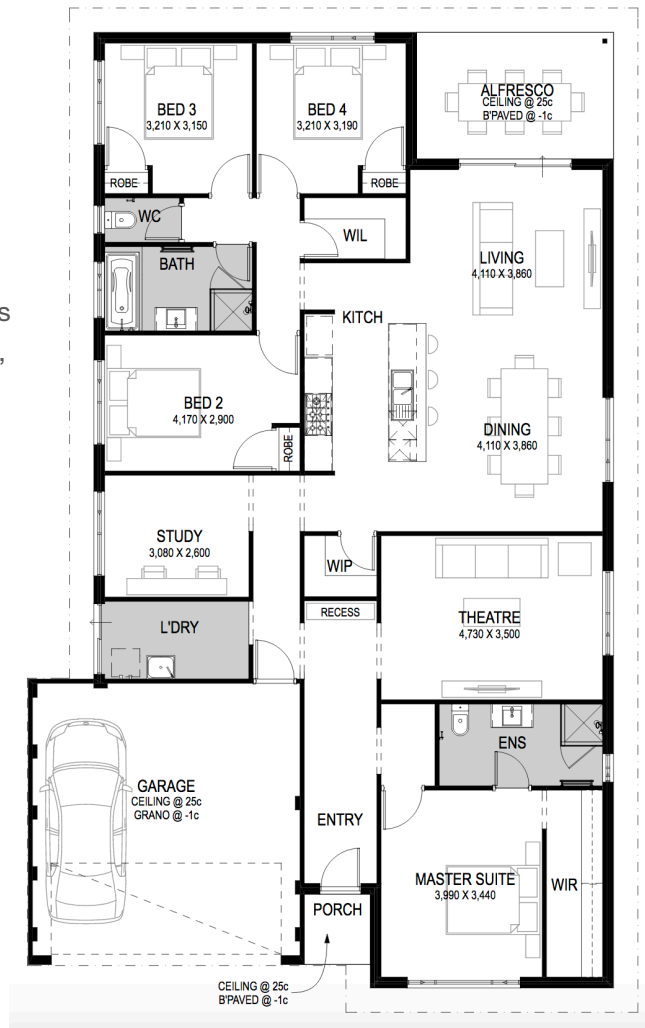


A little piece of paradise From \$394,802*

Situated just off the Bussell Highway and only 2km from the Margaret River town centre, Rapids Landing provides a family-focused community in which fresh, clean air and native surrounds reminds us of life's simplest pleasures. In the heart of the region's wine country, and only minutes from great local beaches, restaurants, parks, and schools, the lifestyle is ideal for those after a life of balance. Within the Estate the beautiful parks and walkways, brilliant native surrounds, and strong sense of community, create a unique lifestyle.

This house and land package includes:

- Premium 900mm luxury Italian SMEG stainless steel hot plate
- Premium 900mm luxury Italian SMEG stainless steel underbench oven
- Premium 900mm luxury Italian SMEG rangehood
- NatHERS 6-star energy rating as standard
- Vinyl to main living areas
- Carpet to bedrooms and theatre (if applicable)
- Blinds to bedrooms (excluding wet areas)
- Acrylic texture coat render (if applicable)
- Clipsal Iconic switches and GPOs throughout
- BGC Residential South West Online Client Portal
- Siteworks included



Ben Golowyn

M: 0467 660 687

E: bengo@bgcsouthwest.com.au